

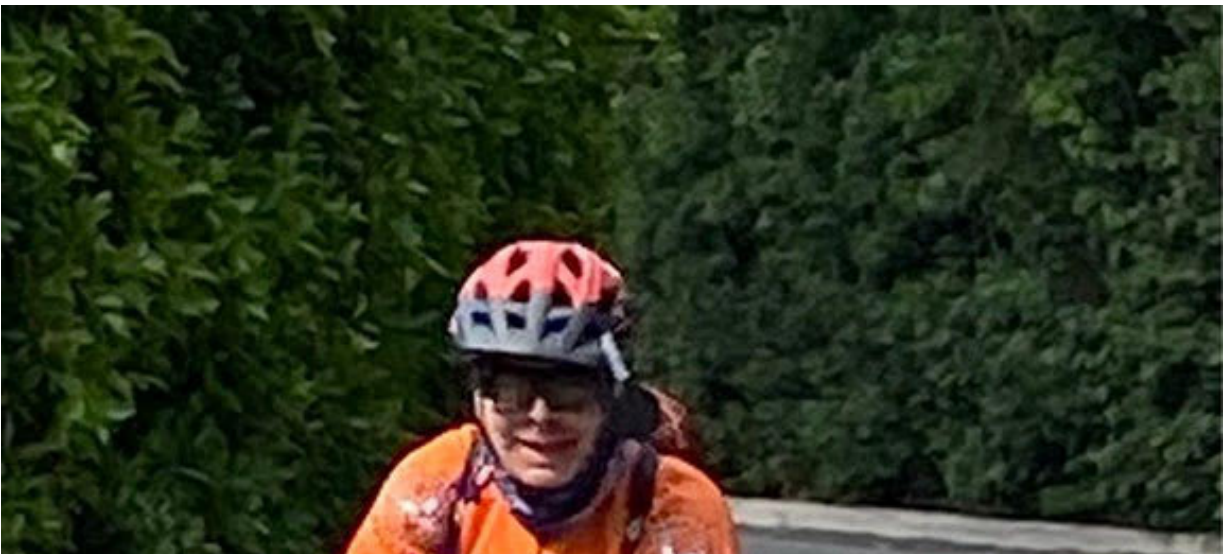
Los Angeles Wheelmen VP Report - June 25, 2024

Hello All:

Last week saw the official beginning of summer and it sure is hot and we do live in a big city, so there is only one song for our theme tonight:

<https://www.youtube.com/watch?v=4K2Uc4SIPok>

Sunday: Although I had every intention of going to the ride Sunday, when I woke up, I just rolled over and went back to sleep. No excuse. Turns out only two riders showed up: **Phil Whitworth** and **Dale Aaronson**. Phil took a selfie of the two of them at the start, but it didn't turn out so well. They each took photos of the other out on the course and those look better, so here they are:





They both intended to do the long and they did go up to Mulholland, but then decided it was too hot to descend into the Valley and then return back, so they cut the route short a bit. Maybe it's just as well I didn't show up because I had wanted to do the long too.

Grand Tour: The Grand Tour was also held last weekend. Unfortunately, I have not been given any information yet as to how it went. I thought there might be some photos on Facebook, but I didn't see any. Maybe next week.

This Sunday: This Sunday we will be riding "Soup to Knott's" which starts in

Buena Park. Both the long and medium go out to Yorba Linda for lunch but the long takes 10 extra miles to get there and does some extra climbing including going over Turnbull. The short stays closer to the start and rides around northern Orange County. It is supposed to be cooler this weekend, but maybe not by much. Last year I didn't start scheduling coastal routes until July and was hoping I could still run inland rides in June this year as well. Maybe not. I hope to be there, but will probably only ride the medium.

Water Levels in the San Gabriel: Mario Solano recently rode up San Gabriel Canyon and sent me these photos from the reservoirs up there. He commented that the first photo shows the water level is low, but it's definitely higher than during the drought years. The second photo seems to show water coming over the spillway of one dam. That would seem to indicate that the reservoir behind that dam is at capacity, so maybe it is only the lower dam which is not full. I'm not sure.





Landslide Area in Palos Verdes: I read in the paper that they have closed to bicycles the portion of Palos Verdes Drive through the landslide area. It will still be open to cars. I'm a little upset about this. I've heard that the road is pretty bad in spots, but my attitude is if a car can get through, a bike should be able to also -- even if you have to get off and walk over the worst spots. But what are you going to do. It's particularly upsetting because there is no really easy alternative through the area.

July Schedule Changes. I've made a couple of changes to the proposed July schedule included with the June Schedule. First, I had forgotten that we usually ride down to the Manhattan Beach Grand Prix and that is being held on July 14th this year. So, we will riding "Off To The Races" that day instead of "Southbay Surprise." Second, I had scheduled "Poking Around PV" on July 21, but that uses the portion of Palos Verdes Drive which has the problems mentioned above. So, I'm substituting "Bikeways of Orange County" as our centuries of the month for July on that date.

Patches of the Week: Last Saturday was the Grand Tour. The Grand Tour is the only event I know of that basically gives out the same patch every year. We used

to give out little numbers to go with it to show how many times you had ridden it and then later a little wedge that showed the year you rode. **Dennis Miller**, until recently, held the record for the most Grand Tour's ridden. He sent me this photo of his many patches



Parting Shot: It's been a while since I've included one of Phil Whitworth's photos of the sign out in Malibu with the weekly seafood related puns. He happened to catch the sign painter this week:



See You On The Road:

Rod Doty, VP

Attachments area

Preview YouTube video Summer in the City - The Lovin' Spoonful [Lyrics]

